

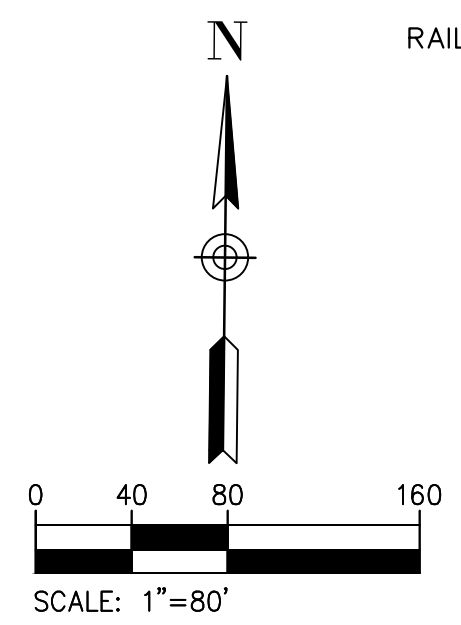
NW COR, NE 1/4  
SEC 19-T16N-R7E  
BRASS MONUMENT FOUND

N88°51'09"E 2261.60'  
N. LINE, NW 1/4,  
SEC. 19-T16N-R7E  
NW COR, NW 1/4  
SEC 19-T16N-R7E  
IRON PIPE FOUND

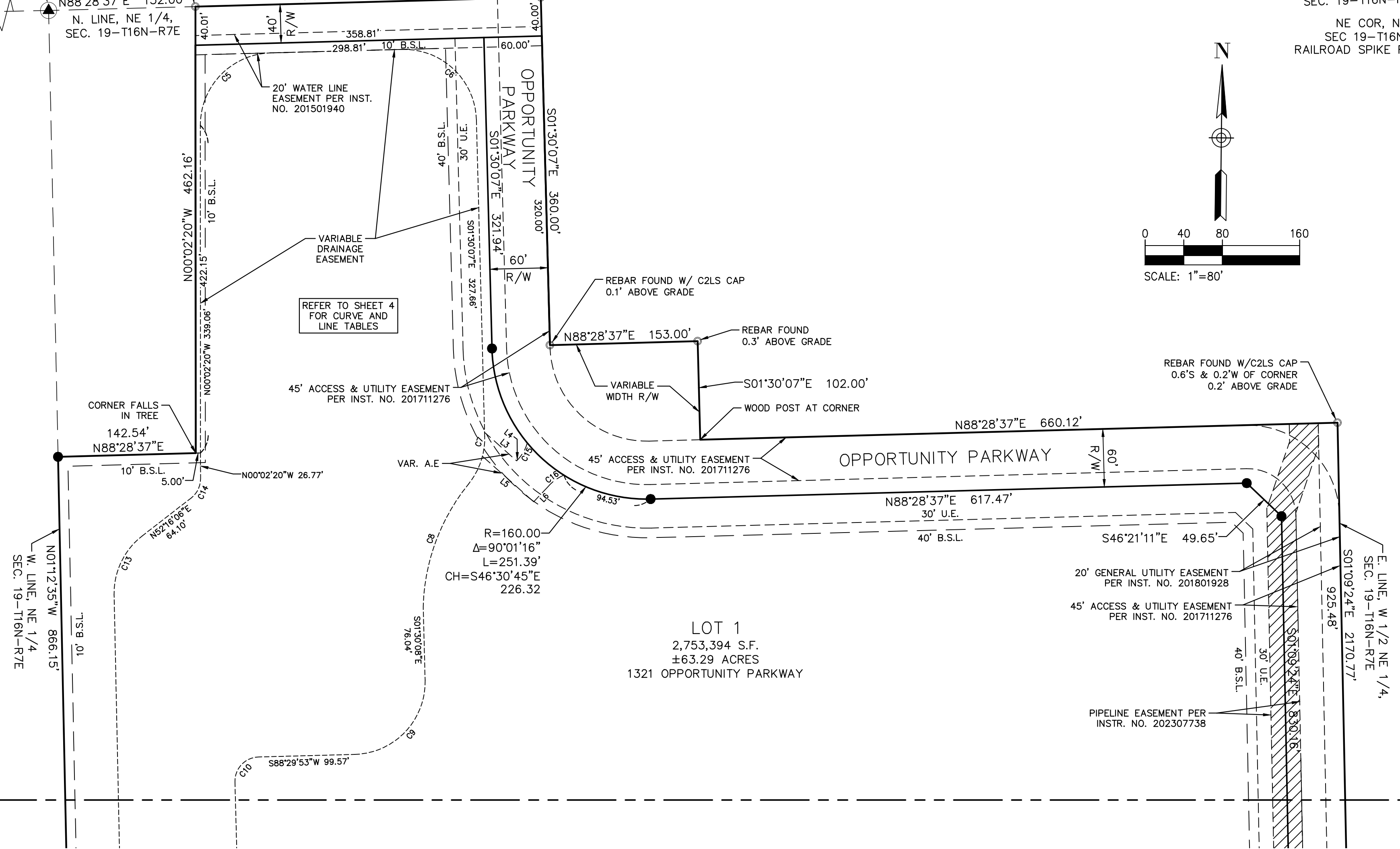
POINT OF BEGINNING  
MAG NAIL FOUND  
0.4' EAST OF CORNER  
N88°28'37"E 152.00'  
N. LINE, NE 1/4,  
SEC. 19-T16N-R7E

MAG NAIL FOUND  
0.4' EAST OF CORNER  
N88°28'37"E 357.78'

N88°28'37"E 2141.49'  
N. LINE, NE 1/4,  
SEC. 19-T16N-R7E  
NE COR, NE 1/4  
SEC 19-T16N-R7E  
RAILROAD SPIKE FOUND



COUNTY ROAD 300 NORTH  
(PUBLIC RIGHT-OF-WAY)  
N88°28'37"E 357.78'



MATCHLINE-SHEET 1  
MATCHLINE-SHEET 2



410 W. OAK STREET, SUITE 9B  
ZIONSVILLE, IN 46077  
(317)344-2822

THIS SURVEY PREPARED FOR:  
**Kimley»Horn**  
2023 KIMLEY-HORN AND ASSOCIATES, INC.  
250 EAST 96TH STREET, SUITE 580,  
INDIANAPOLIS, IN 46240  
PHONE: 317-218-9560  
WWW.KIMLEY-HORN.COM

K&G PROJECT NO. 210111  
LAST REVISED 09/13/2023

**LEGEND**

- REBAR SET WITH YELLOW CAP STAMPED "K&G LS FIRM 0141"
- MAG NAIL SET
- B.S.L. BUILDING SETBACK LINE
- R/W RIGHT-OF-WAY WIDTH
- D.&U.E. DRAINAGE & UTILITY EASEMENT
- S.S.E. SANITARY SEWER EASEMENT
- D.E. DRAINAGE EASEMENT
- VAR. VARIABLE
- U.E. UTILITY EASEMENT
- A.E. ACCESS EASEMENT

**EASEMENT LEGEND**

- PIPELINE EASEMENT PER INSTR. NO. 202307738
- 30' DRAINAGE EASEMENT

OWNER: SHEAR GF1, LLC  
SOURCE OF TITLE: INSTRUMENT NO. 202207378

**PROGRESS PARK  
SECTION 4**

Sec. 19-T16N-R7E  
City of Greenfield, Hancock County, Indiana